

ISTITUTO AUTONOMO PER LE CASE POPOLARI  
DELLA PROVINCIA DI FOGGIA

PROGRAMMA DI RIQUALIFICAZIONE URBANA "RIMODULATO"  
COMUNE DI FOGGIA

UBICAZIONE: ZONA CROCI NORD - VIA LUCERA  
EDILIZIA RESIDENZIALE PUBBLICA  
SECONDO STRALCIO FUNZIONALE

Progetto:  
- Ing. Matteo Torre  
- Ing. Emilio Sacco

PROGETTO ESECUTIVO  
RELATIVO AI LOTTI 5-6

Integrazioni nota 0018545/11

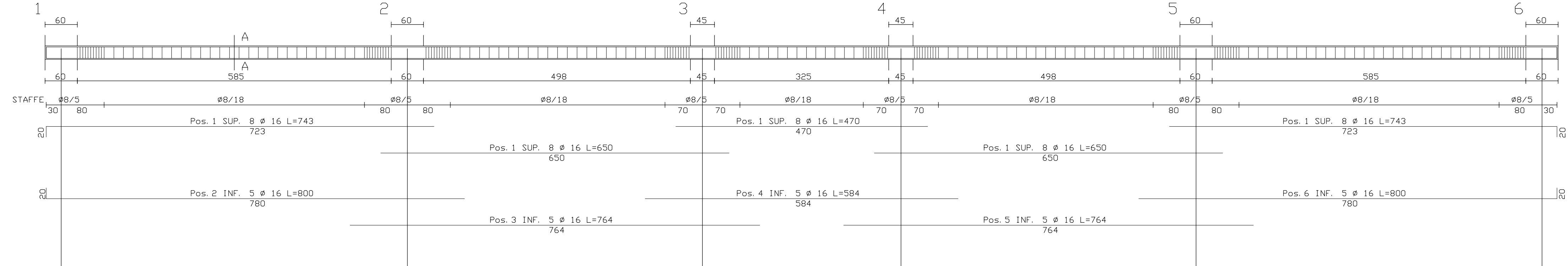
Calcoli Statici:  
- Ing. Alfonso Cristalli

TRAVI PIANO PRIMO

Collaboratori:  
- Geom. Salvatore Rubino

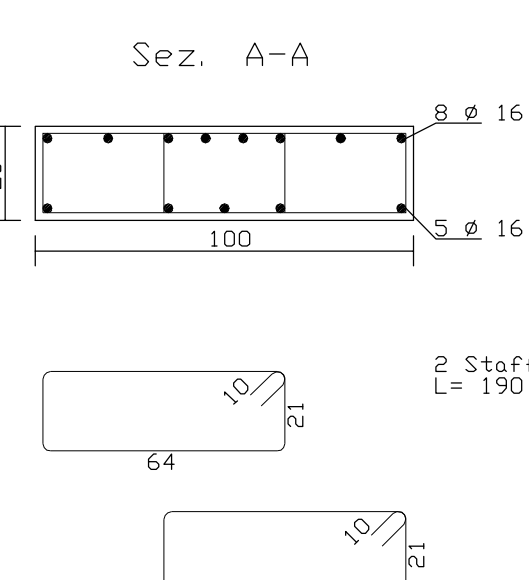
ELABORATO N°	SCALA	PE	Il Responsabile del Procedimento
E S a.10	1/50	PE	

l'impalcato piano primo01 (1-2-3-4-5-6)

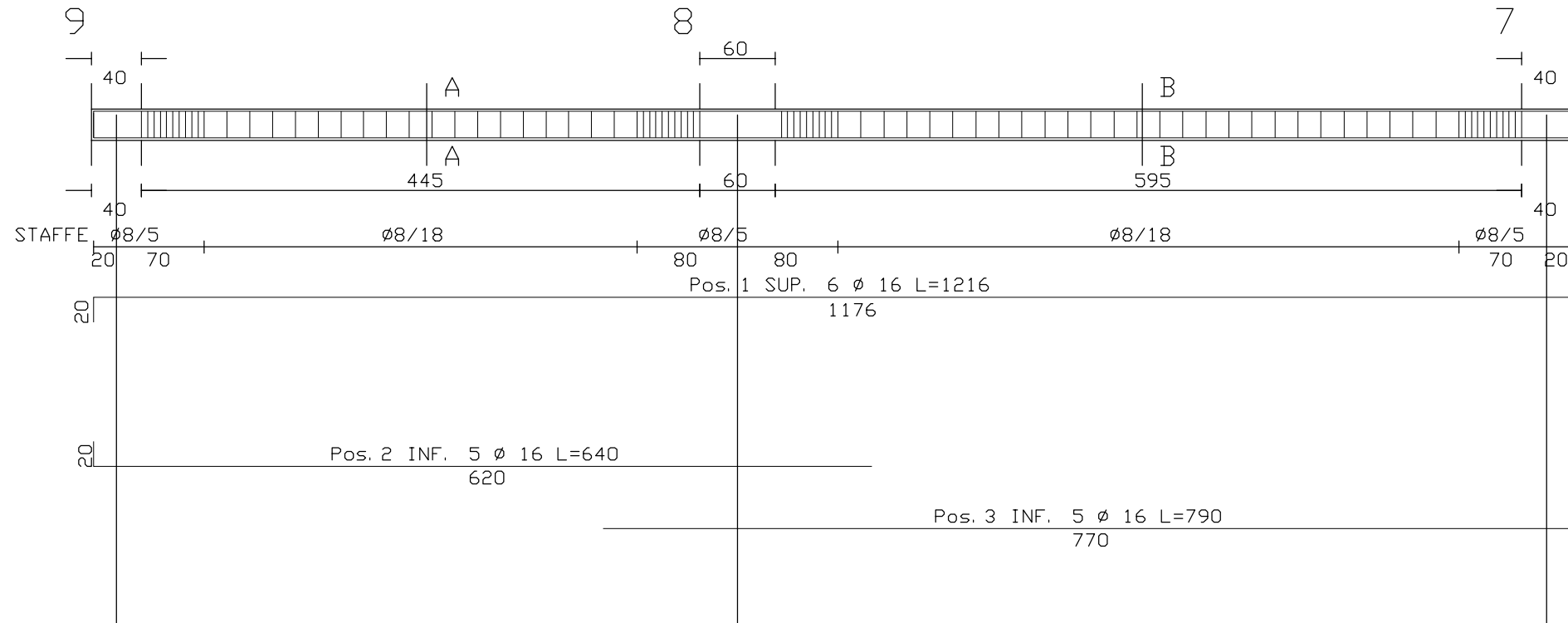


POS	DIAM #	LONGH
1 SUP. 8 # 16	L=1050	
2 INF. 5 # 16	L=1050	
3 INF. 5 # 16	L=1050	
4 INF. 5 # 16	L=1050	
5 INF. 5 # 16	L=1050	
6 INF. 5 # 16	L=1050	

COMPUTO DEI MATERIALI:  
BARRI DI ARMATURA  
# 16 L TOT=414.00m (+Kg 653.56)  
STAFFE # 8 L=1048.80m (+Kg 413.84)  
Num=502 64 X 21 L=1048.80m  
Kg 1047.40  
TOTALI CALCESTRUZZO:  
Mq 7.03  
TOTALI CASSERI:  
Mq 45.30

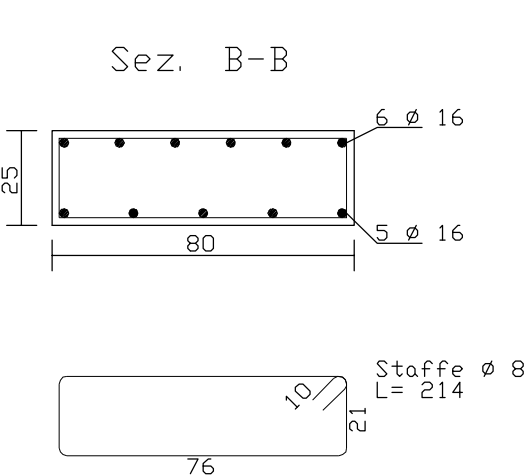
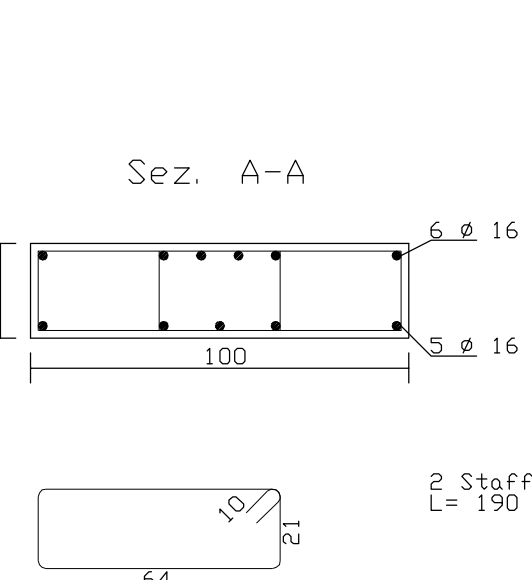


l'impalcato piano primo02 (9-8-7)

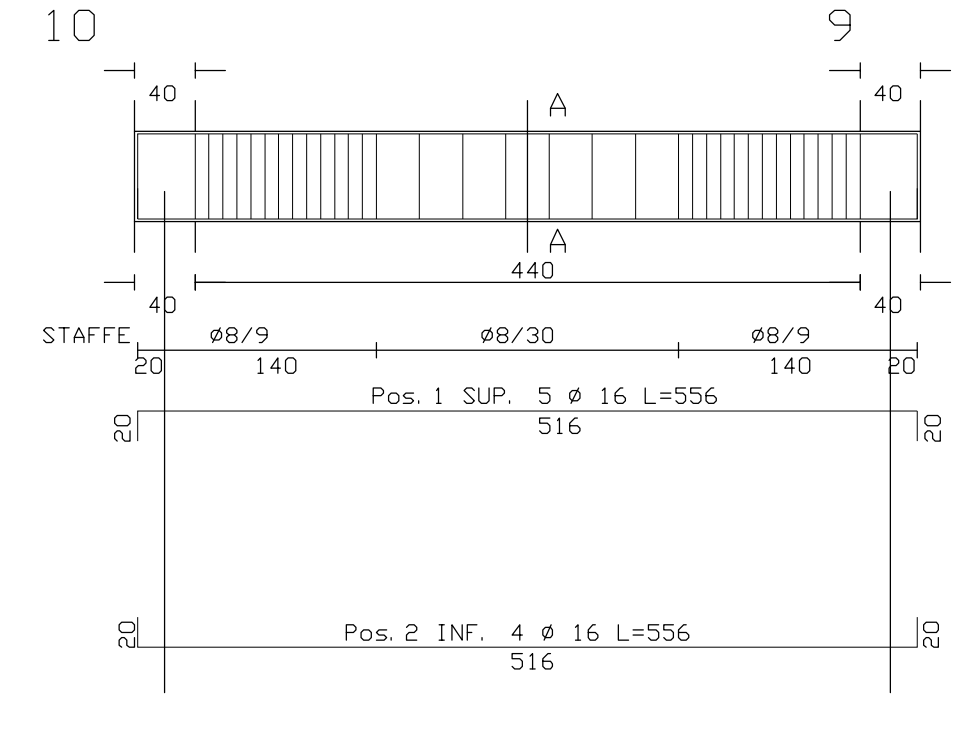


POS	DIAM #	LONGH
1 SUP. 8 # 16	L=1216	
2 INF. 5 # 16	L=1216	
3 INF. 5 # 16	L=1216	

COMPUTO DEI MATERIALI:  
BARRI DI ARMATURA  
# 16 L TOT=144.46m (+Kg 208.01)  
STAFFE # 8 L=1325.74m (+Kg 130.48)  
Num=108 64 X 21 L=1325.74m  
Kg 360.48  
TOTALI CALCESTRUZZO:  
Mq 2.53  
TOTALI CASSERI:  
Mq 15.81

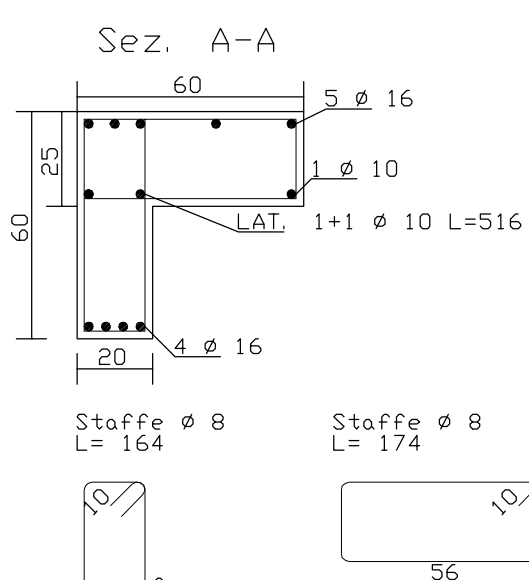


l'impalcato piano primo14 (10-9)

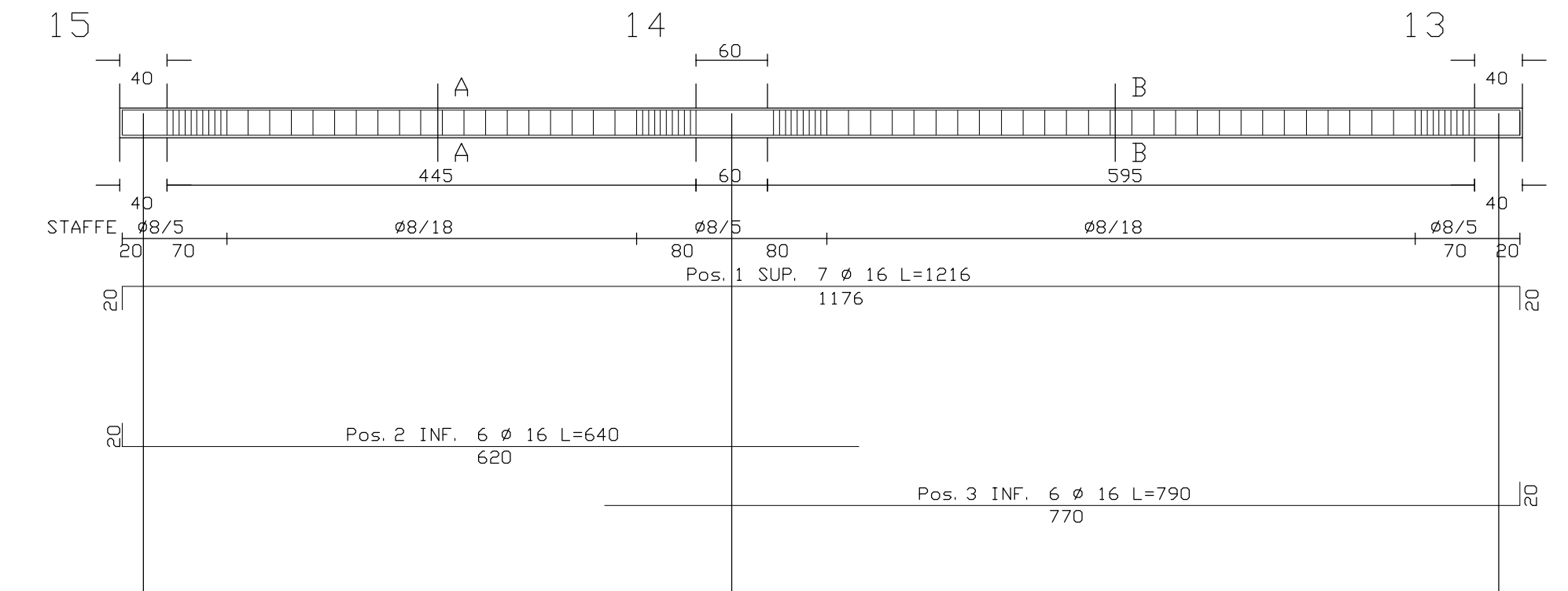


POS	DIAM #	LONGH
1 SUP. 8 # 16	L=1216	
2 INF. 5 # 16	L=1216	
3 INF. 5 # 16	L=1216	

COMPUTO DEI MATERIALI:  
BARRI DI ARMATURA  
# 16 L TOT=144.46m (+Kg 208.01)  
STAFFE # 8 L=1325.74m (+Kg 130.48)  
Num=108 64 X 21 L=1325.74m  
Kg 360.48  
TOTALI CALCESTRUZZO:  
Mq 2.53  
TOTALI CASSERI:  
Mq 15.81

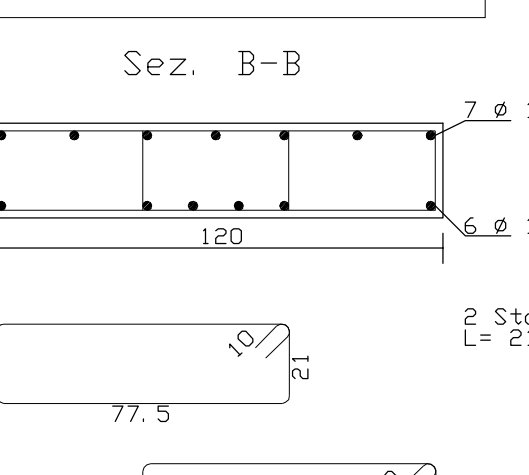
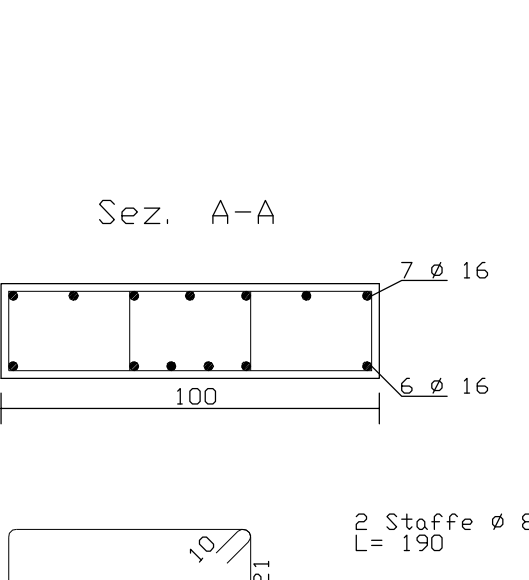


l'impalcato piano primo04 (15-14-13)

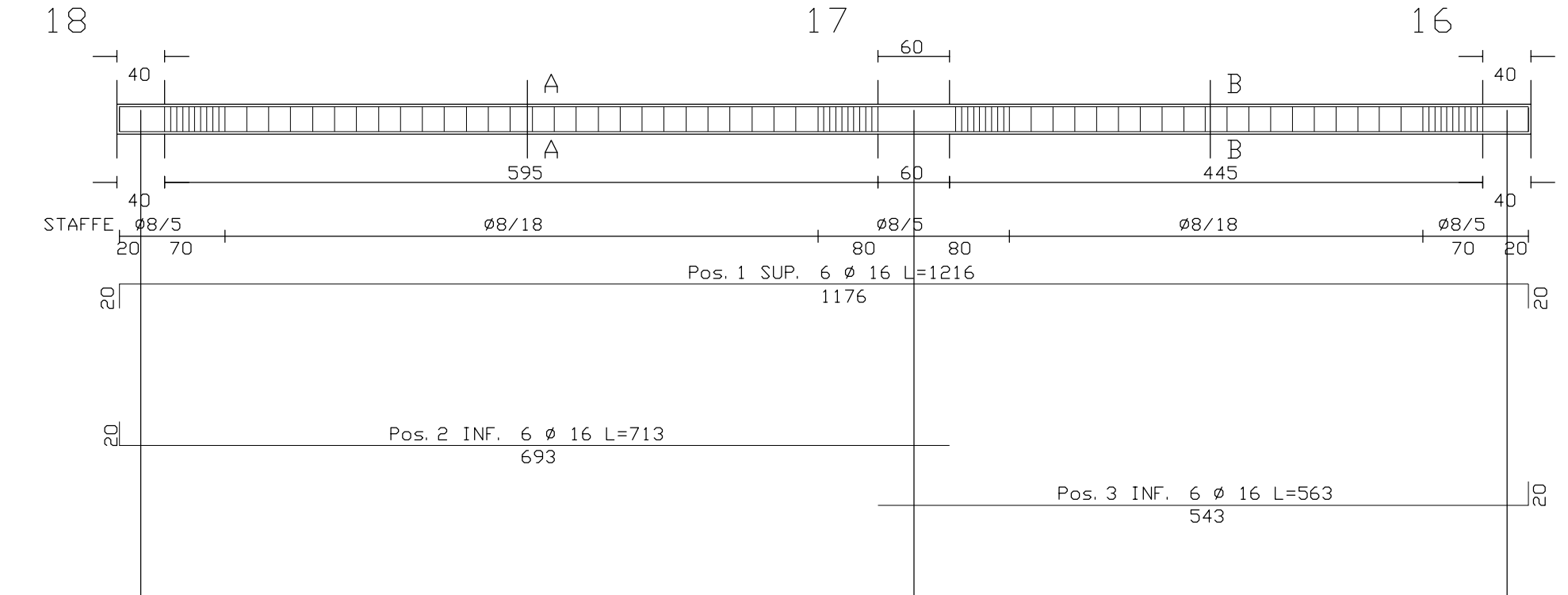


POS	DIAM #	LONGH
1 SUP. 8 # 16	L=1216	
2 INF. 5 # 16	L=1216	
3 INF. 5 # 16	L=1216	

COMPUTO DEI MATERIALI:  
BARRI DI ARMATURA  
# 16 L TOT=170.90m (+Kg 269.77)  
STAFFE # 8 L=1469.94m (+Kg 185.43)  
Num=108 64 X 21 L=1469.94m  
Kg 455.20  
TOTALI CALCESTRUZZO:  
Mq 3.17  
TOTALI CASSERI:  
Mq 18.39

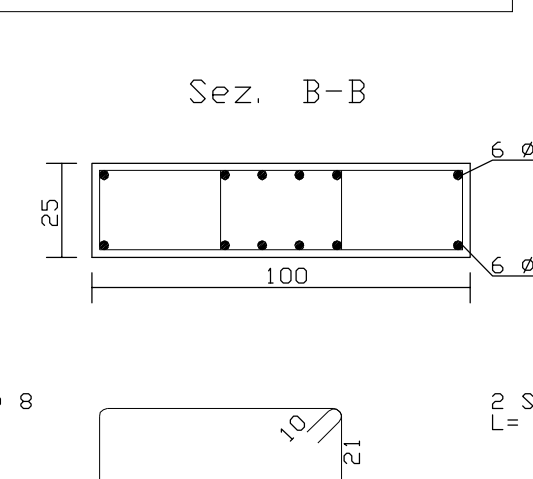
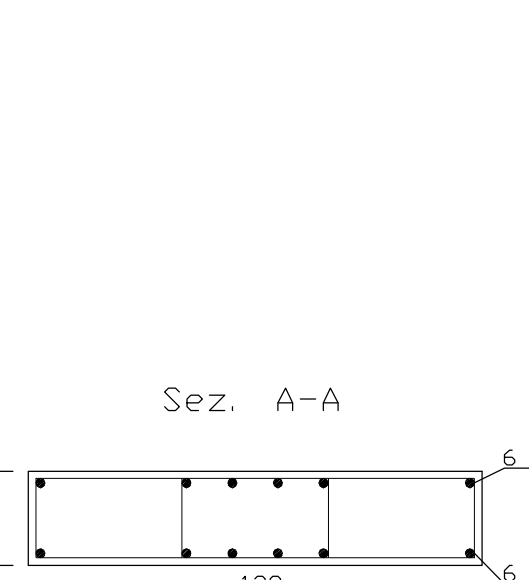


l'impalcato piano primo05 (18-17-16)

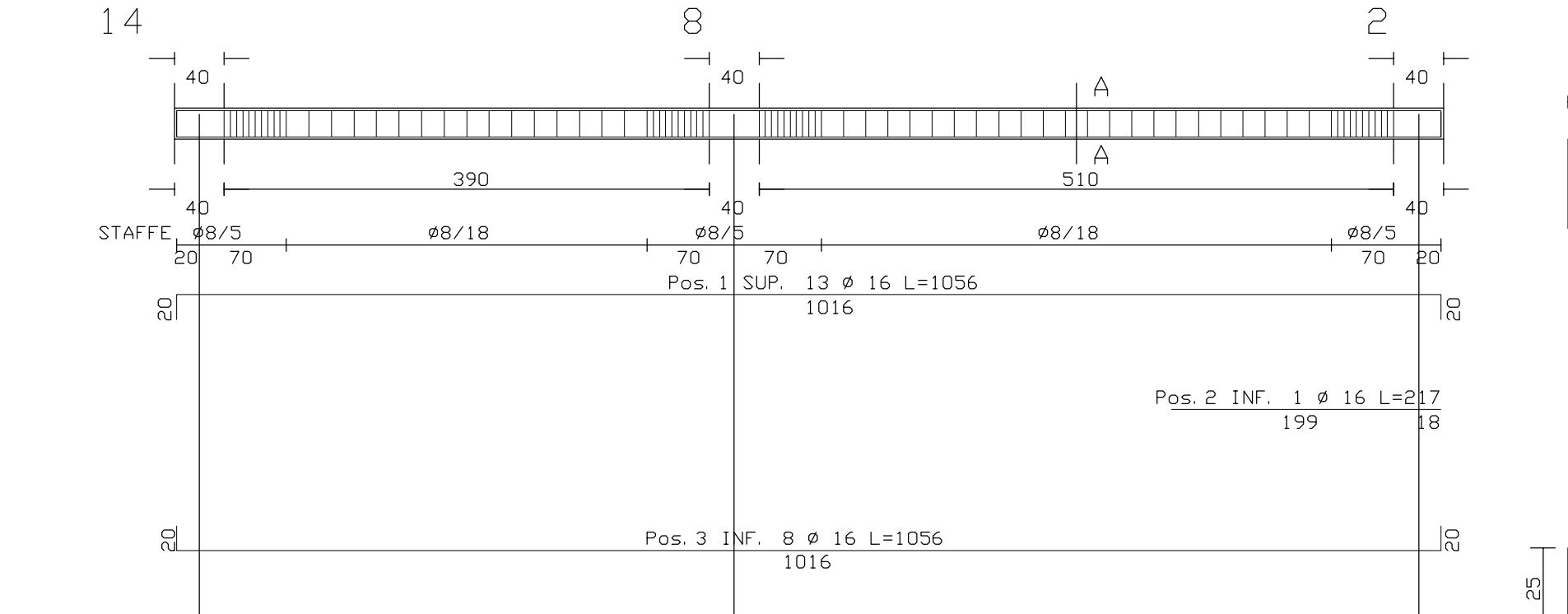


POS	DIAM #	LONGH
1 SUP. 8 # 16	L=1216	
2 INF. 5 # 16	L=1216	
3 INF. 5 # 16	L=1216	

COMPUTO DEI MATERIALI:  
BARRI DI ARMATURA  
# 16 L TOT=149.50m (+Kg 235.99)  
STAFFE # 8 L=1470.46m (+Kg 185.64)  
Num=114 64 X 21 L=1470.46m  
Kg 421.64  
TOTALI CALCESTRUZZO:  
Mq 3.17  
TOTALI CASSERI:  
Mq 18.39

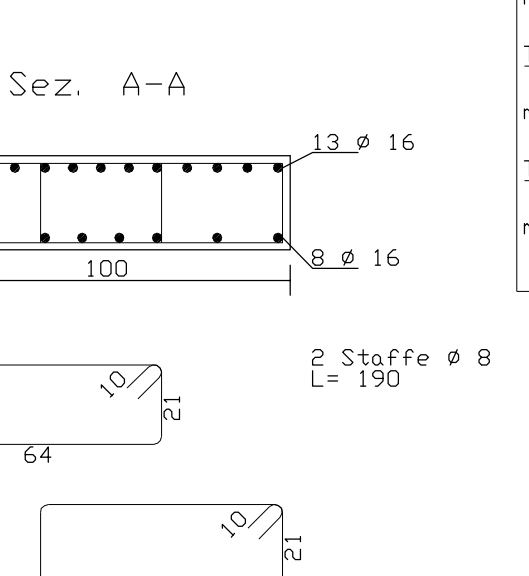


l'impalcato piano primo07 (14-8-2)

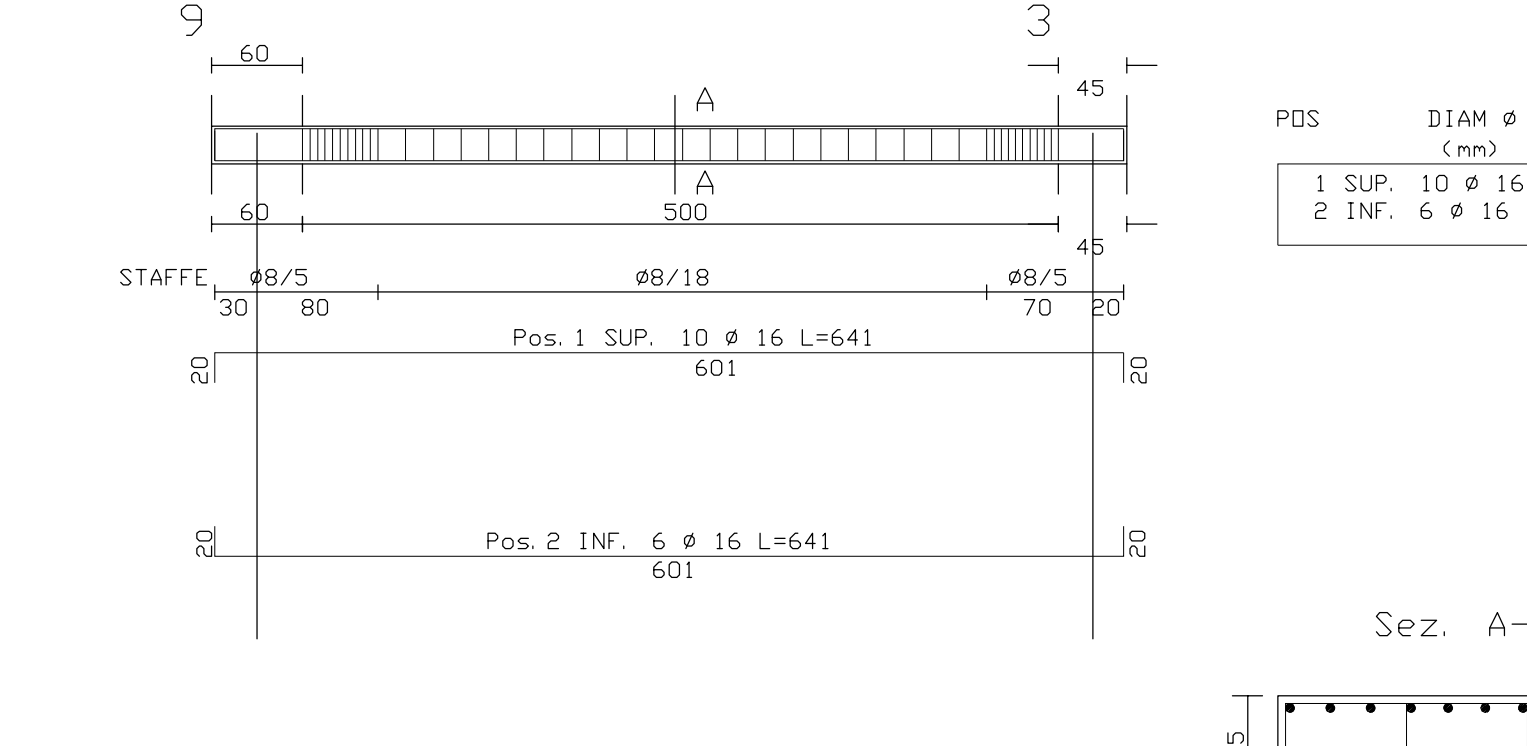


POS	DIAM #	LONGH
1 SUP. 8 # 16	L=1050	
2 INF. 5 # 16	L=1050	
3 INF. 5 # 16	L=1050	

COMPUTO DEI MATERIALI:  
BARRI DI ARMATURA  
# 16 L TOT=223.93m (+Kg 353.44)  
STAFFE # 8 L=1364.80m (+Kg 143.94)  
Num=192 64 X 21 L=1364.80m  
Kg 497.38  
TOTALI CALCESTRUZZO:  
Mq 2.55  
TOTALI CASSERI:  
Mq 15.30

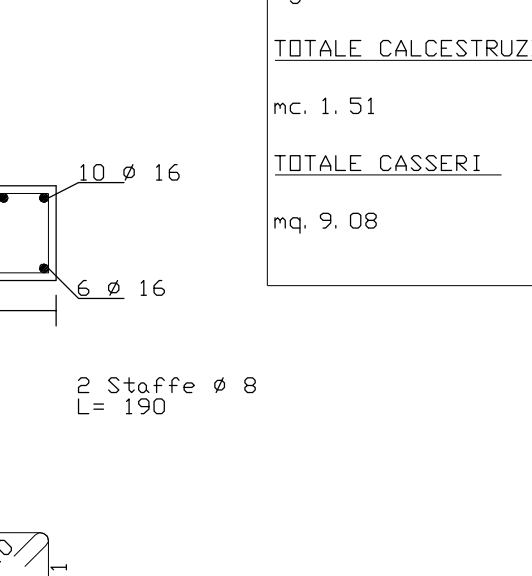


l'impalcato piano primo11 (9-3)

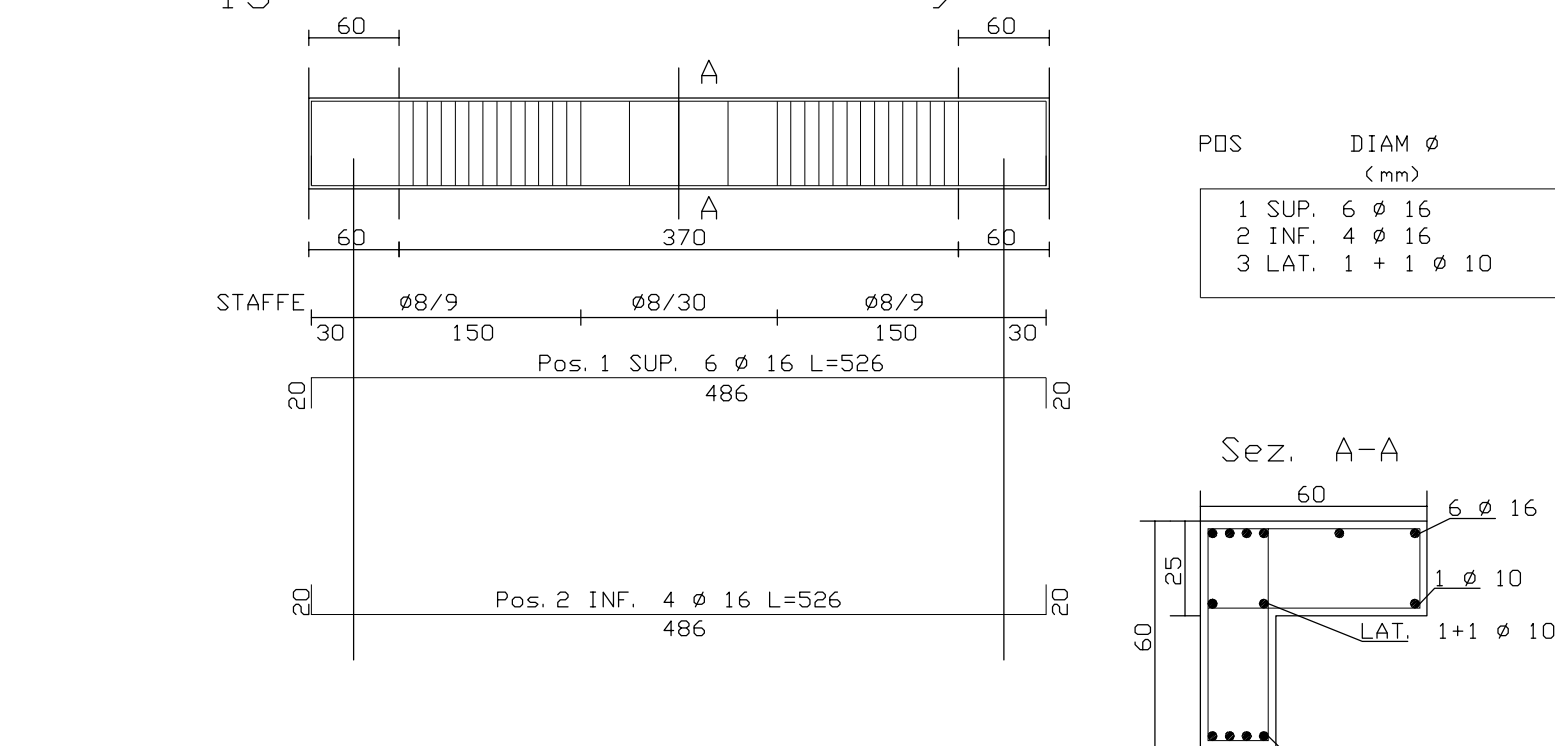


POS	DIAM #	LONGH
1 SUP. 8 # 16	L=1050	
2 INF. 5 # 16	L=1050	
3 INF. 5 # 16	L=1050	

COMPUTO DEI MATERIALI:  
BARRI DI ARMATURA  
# 16 L TOT=246.14m (+Kg 388.49)  
STAFFE # 8 L=1364.80m (+Kg 143.94)  
Num=192 64 X 21 L=1364.80m  
Kg 532.44  
TOTALI CALCESTRUZZO:  
Mq 2.55  
TOTALI CASSERI:  
Mq 15.30

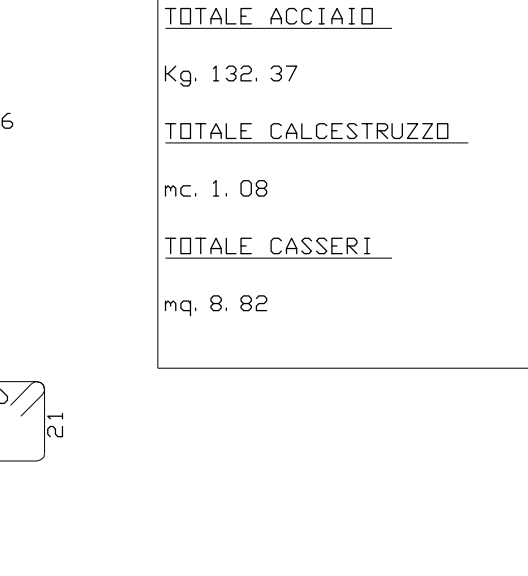


l'impalcato piano primo10 (15-9)

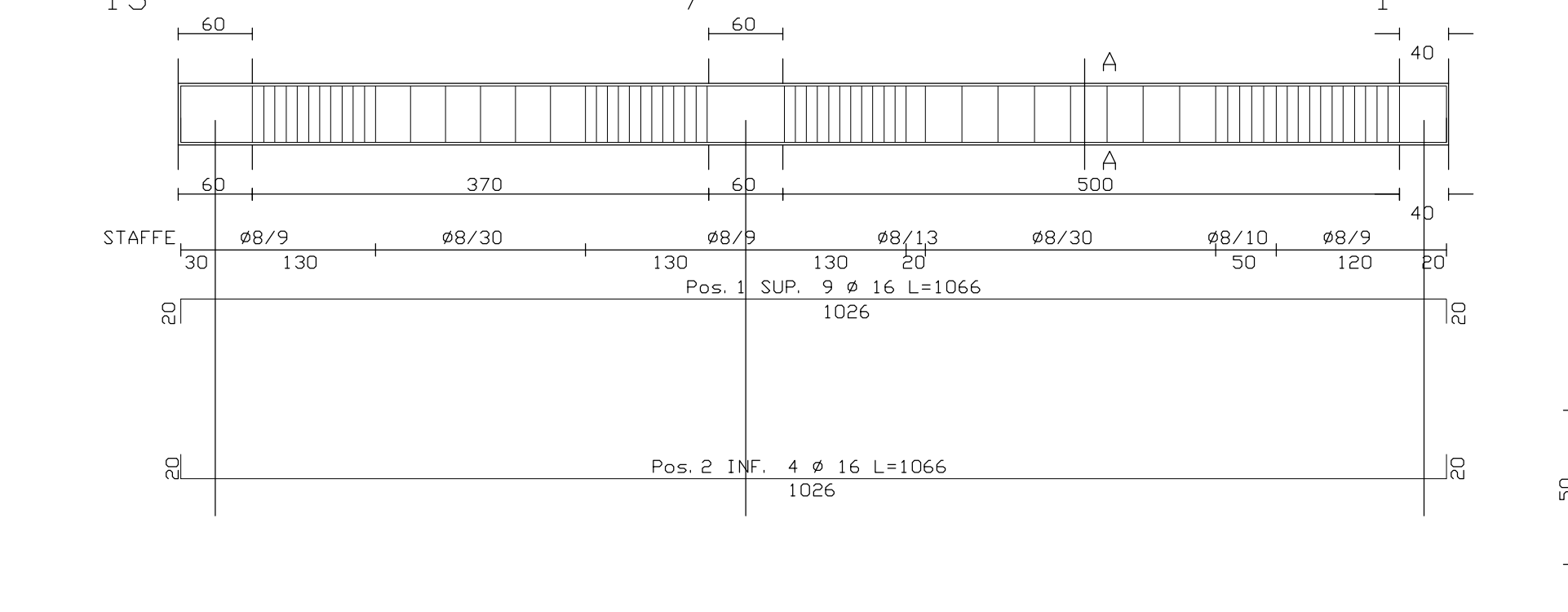


POS	DIAM #	LONGH
1 SUP. 8 # 16	L=1050	
2 INF. 5 # 16	L=1050	
3 INF. 5 # 16	L=1050	

COMPUTO DEI MATERIALI:  
BARRI DI ARMATURA  
# 16 L TOT=246.14m (+Kg 388.49)  
STAFFE # 8 L=1364.80m (+Kg 143.94)  
Num=192 64 X 21 L=1364.80m  
Kg 532.44  
TOTALI CALCESTRUZZO:  
Mq 2.55  
TOTALI CASSERI:  
Mq 15.30

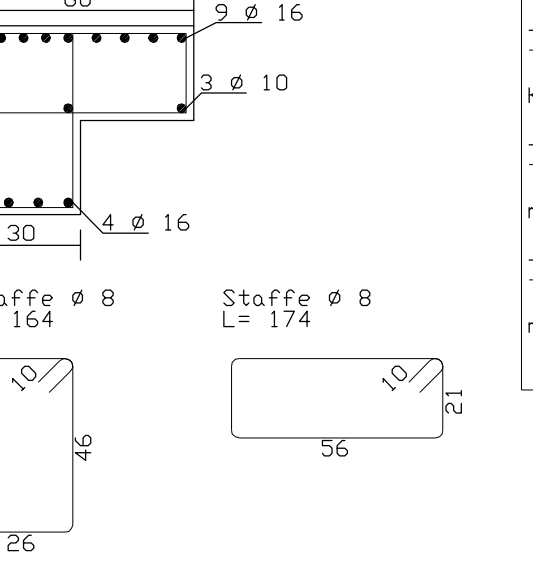


l'impalcato piano primo06 (13-7-1)

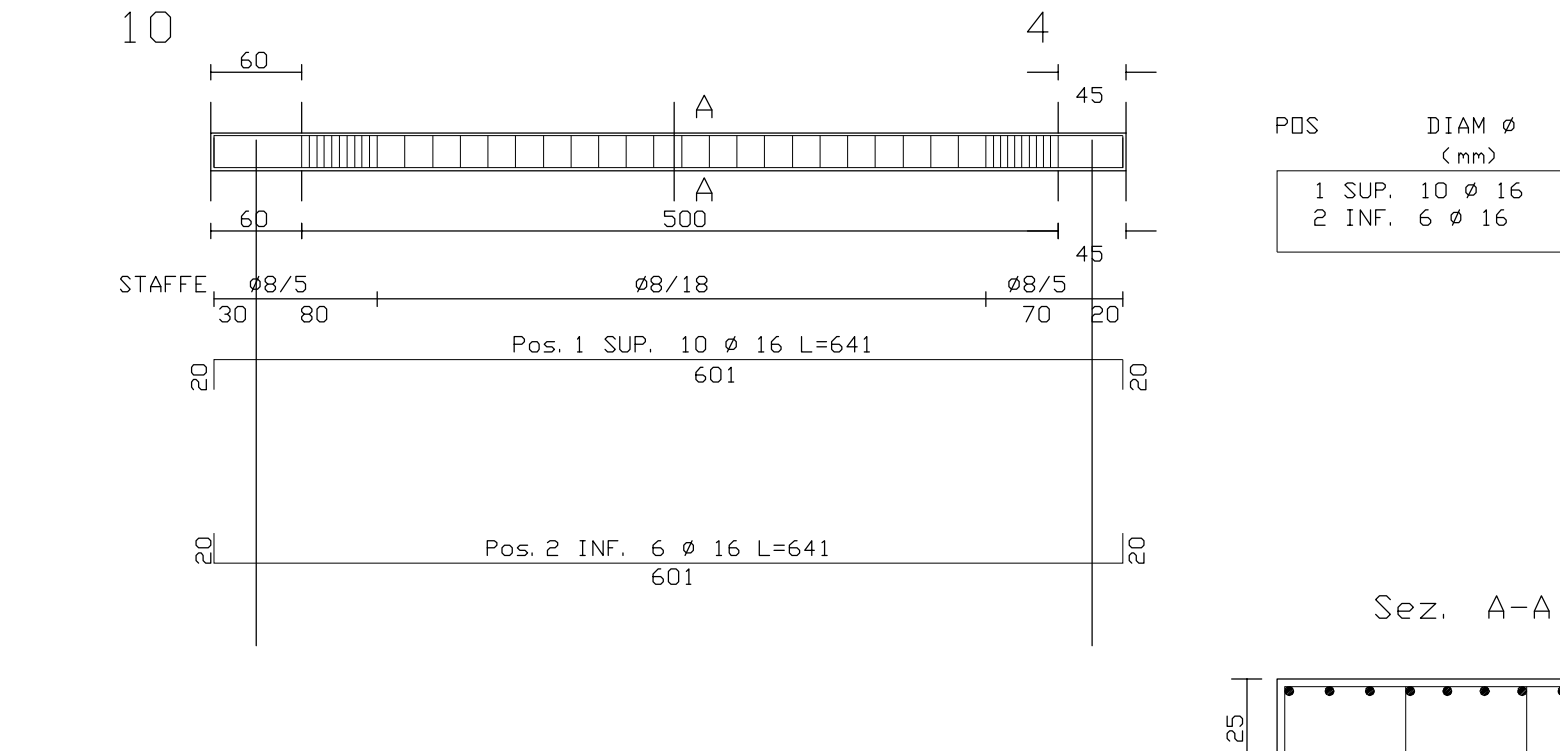


POS	DIAM #	LONGH
1 SUP. 8 # 16	L=1050	
2 INF. 5 # 16	L=1050	
3 INF. 5 # 16	L=1050	

COMPUTO DEI MATERIALI:  
BARRI DI ARMATURA  
# 16 L TOT=138.90m (+Kg 218.73)  
STAFFE # 8 L=135.00m (+Kg 19.75)  
Num=43 26 X 46 L=135.00m  
Kg 315.53  
TOTALI CALCESTRUZZO:  
Mq 2.32  
TOTALI CASSERI:  
Mq 16.48

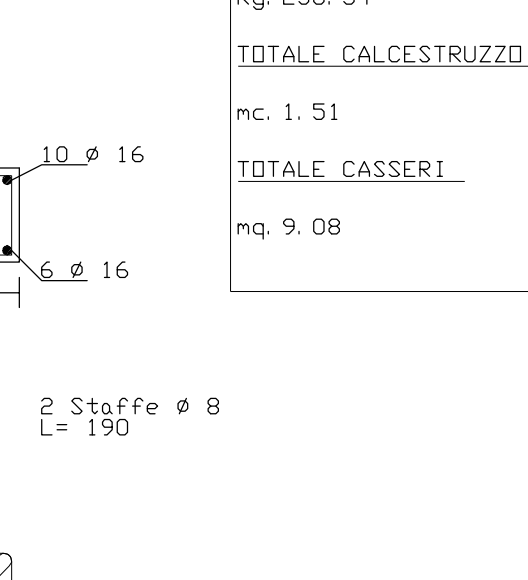


l'impalcato piano primo13 (10-4)

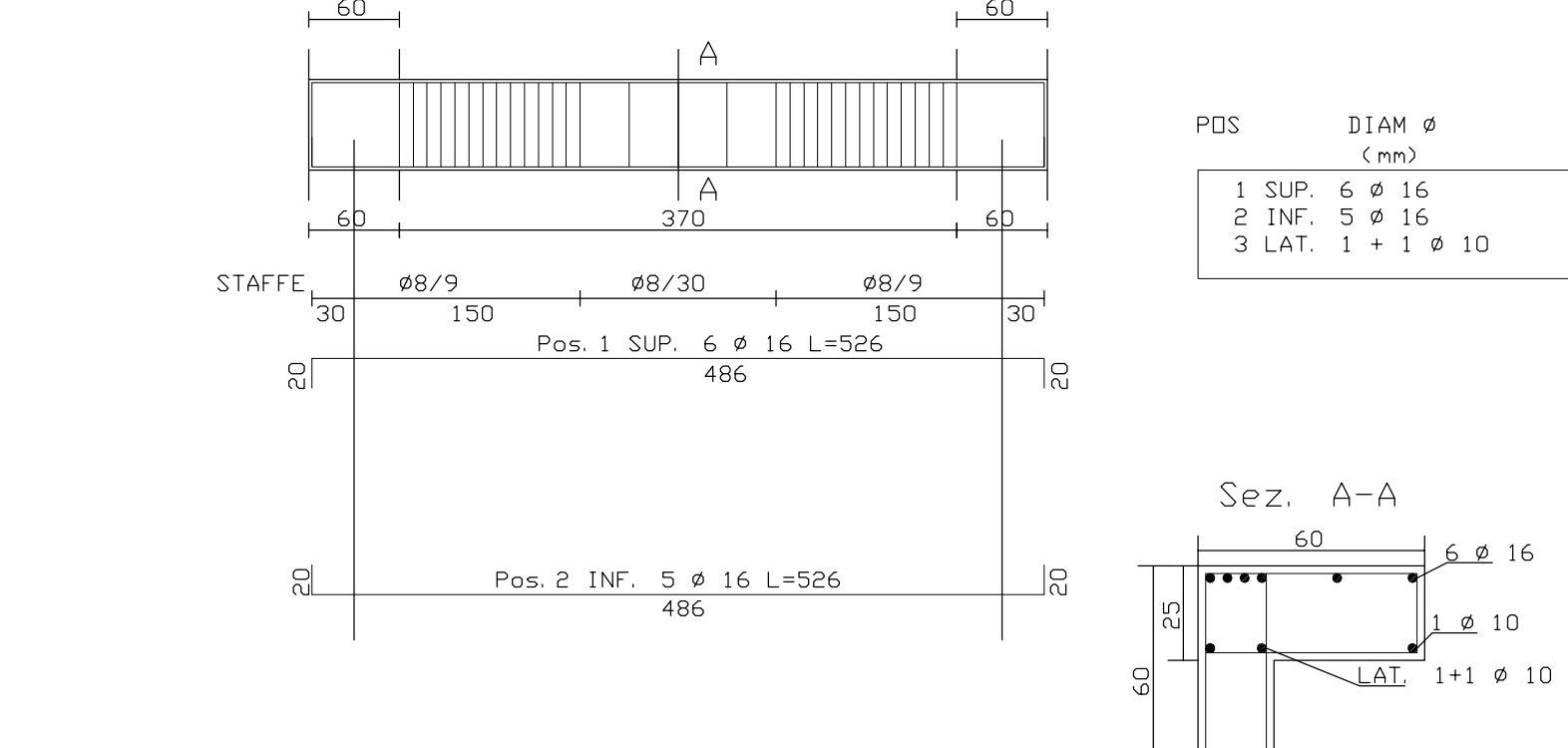


POS	DIAM #	LONGH
1 SUP. 8 # 16	L=1050	
2 INF. 5 # 16	L=1050	
3 INF. 5 # 16	L=1050	

COMPUTO DEI MATERIALI:  
BARRI DI ARMATURA  
# 16 L TOT=102.56m (+Kg 161.87)  
STAFFE # 8 L=129.40m (+Kg 94.46)  
Num=126 64 X 21 L=129.40m  
Kg 256.34  
TOTALI CALCESTRUZZO:  
Mq 1.51  
TOTALI CASSERI:  
Mq 9.08

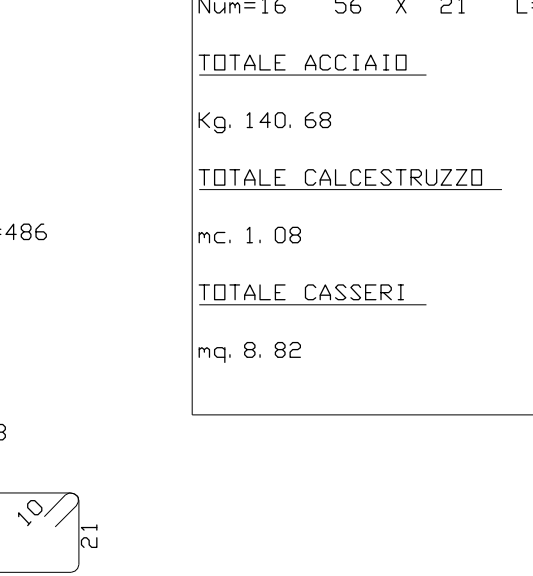


l'impalcato piano primo12 (16-10)

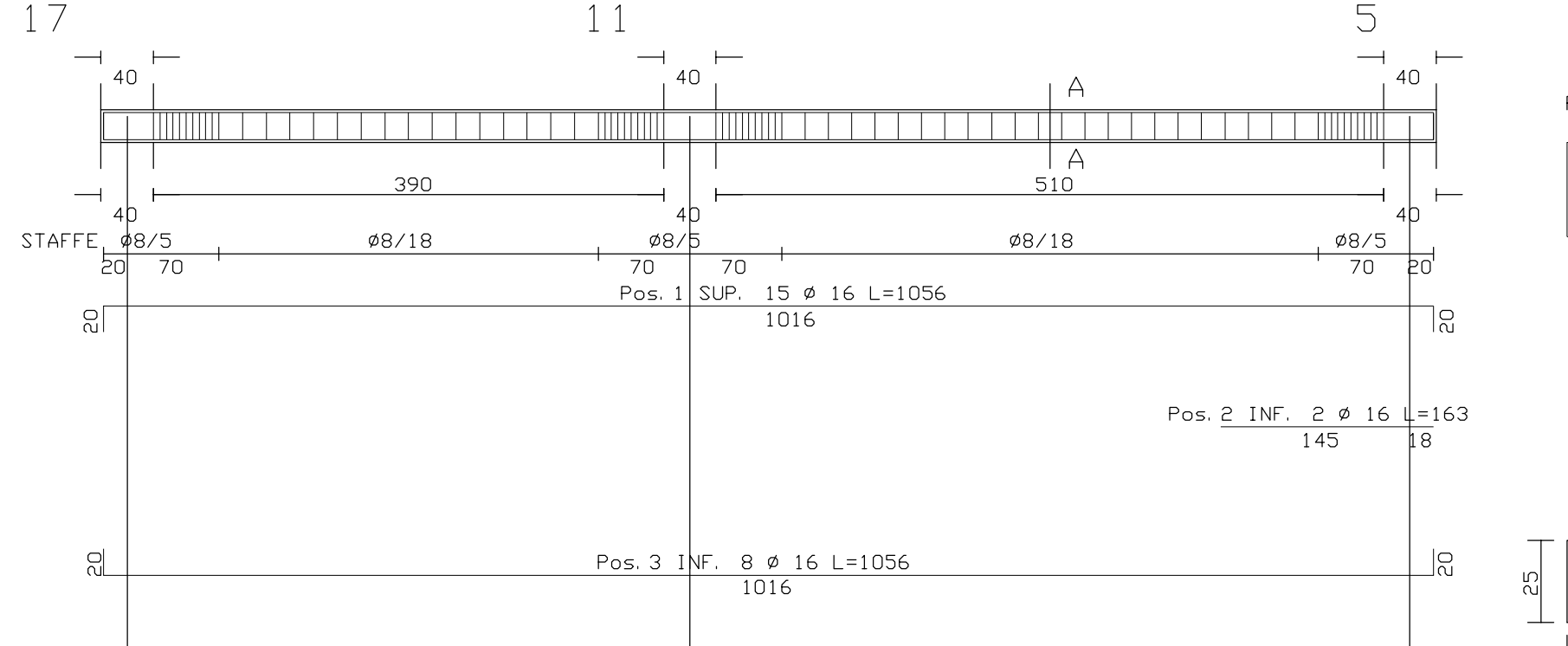


POS	DIAM #	LONGH
1 SUP. 8 # 16	L=1050	
2 INF. 5 # 16	L=1050	
3 INF. 5 # 16	L=1050	

COMPUTO DEI MATERIALI:  
BARRI DI ARMATURA  
# 16 L TOT=157.86m (+Kg 91.33)  
STAFFE # 8 L=151.64m (+Kg 40.11)  
Num=48 26 X 46 L=151.64m  
Kg 140.68  
TOTALI CALCESTRUZZO:  
Mq 1.08  
TOTALI CASSERI:  
Mq 9.82

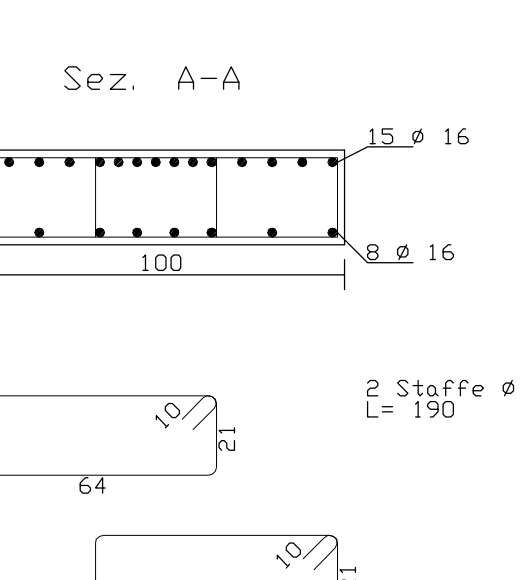


l'impalcato piano primo08 (17-11-5)

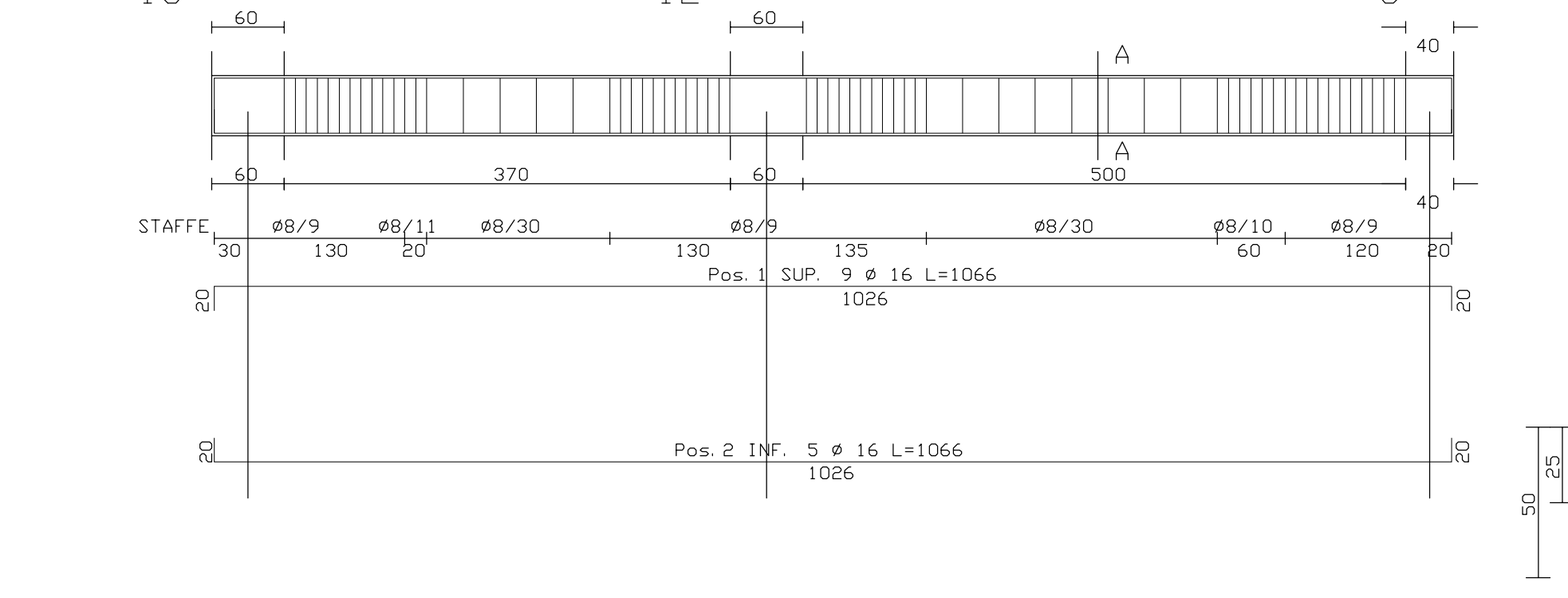


POS	DIAM #	LONGH
1 SUP. 8 # 16	L=1050	
2 INF. 5 # 16	L=1050	
3 INF. 5 # 16	L=1050	

COMPUTO DEI MATERIALI:  
BARRI DI ARMATURA  
# 16 L TOT=246.14m (+Kg 388.49)  
STAFFE # 8 L=1364.80m (+Kg 143.94)  
Num=192 64 X 21 L=1364.80m  
Kg 532.44  
TOTALI CALCESTRUZZO:  
Mq 2.55  
TOTALI CASSERI:  
Mq 15.30



l'impalcato piano primo09 (18-12-6)



POS	DIAM #	LONGH
1 SUP. 8 # 16	L=1050	
2 INF. 5 # 16	L=1050	
3 INF. 5 # 16	L=1050	

COMPUTO DEI MATERIALI:  
BARRI DI ARMATURA  
# 16 L TOT=149.50m (+Kg 235.99)  
STAFFE # 8 L=1470.46m (+Kg 185.64)  
Num=114 64 X 21 L=1470.46m  
Kg 421.64  
TOTALI CALCESTRUZZO:  
Mq 3.17  
TOTALI CASSERI:  
Mq 18.39

